



Support for Microsoft Exchange 2010

CA ARCserve® Replication and CA ARCserve® High Availability, formerly known as CA XOSoft™ Replication and CA XOSoft™ High Availability are software solutions based on asynchronous real-time replication that provides high availability and continuous data protection for Microsoft Exchange Server and other applications on both 32- and 64-bit Windows servers. They support Exchange 2010 including the latest service pack SP1 as well as older Exchange releases.

OVERVIEW

CA ARCserve Replication and High Availability products provide efficient real-time asynchronous replication that is highly tuned for WAN use. There are also built-in tools to manage bandwidth utilization/throttling as well as built in compression to improve throughput.

CA ARCserve High Availability adds server and application monitoring with automated and push-button failover along with push-button failback. Both products provide a granular level of replication for Exchange server 2010 databases. In the latest release, the replication and high availability protection have been moved from the Storage group level to the Mailbox store level.

Both products also provide one-to-many replication, which allows users to have multiple copies of their Exchange databases.

BENEFITS

- Replication – Continuous and periodic replication to a secondary server ensures that the very latest data is available in the event of a failure.
- Automatically discovers all the exchange databases running on the Master Exchange Server and gives the option to replicate only selected Mailbox databases.
- Auto-configures the Exchange Replica Server during Scenario creation to make sure Exchange settings are identical to the Master.
- Provides automated, non-disruptive testing of the Replica Server any time without interrupting the production server.
- Data Rewind allows roll back of the dataset on the replica host to remove corruption should a corruption event affect the production server.

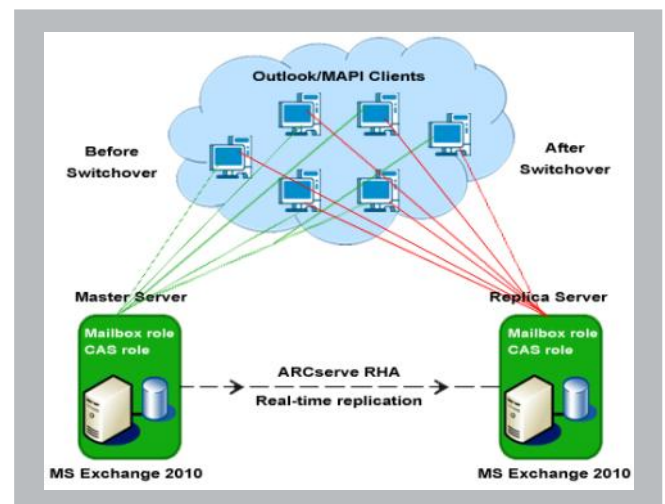
Install/Configure

The Installation of CA ARCserve Replication and High Availability products is straightforward and wizard-driven. You need to install CA ARCserve Replication or High Availability engine on each Master and Replica Exchange Server. Installation does not require a reboot or application shutdown.

CA ARCserve Replication and High Availability products have their own licenses. The license requirements depend on the Operating Systems involved (Standard or Enterprise). License count is based on the number of Exchange Server Hosts (Master and Replica servers) involved in a scenario.

The Scenario Creation Wizard guides you through the steps required to create and configure Exchange 2010 Replication and High Availability Scenarios.

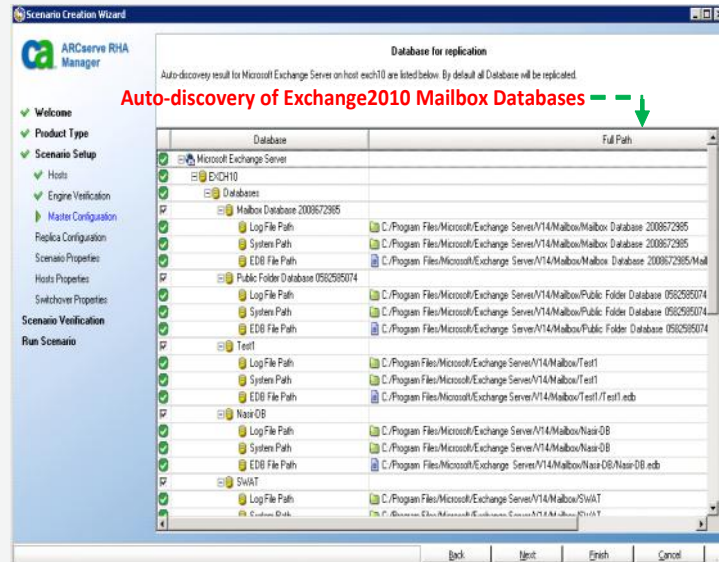
In order to create an Exchange 2010 scenario, administrators need to make sure Exchange Server is installed both on the Master and Replica servers. Both Servers should have identical Exchange/Windows O/S edition and version including same Service packs. Both should have the Mailbox role installed. During Scenario creation, the system auto-configures Exchange databases on the replica identical to the master server. The ARCserve Replication or High Availability administrator (service account) should have Domain admin privileges in order to carry-out successful replication and failover of Exchange Server. Once initial synchronization completes, your replication or high availability scenario maintains the Replica Exchange server by replicating real time byte-level changes on the Master Server. With CA ARCserve High Availability, you can automatically failover the moment a failure is detected, or use the push-button failover at your discretion.



How CA ARCserve Replication and CA ARCserve High Availability Works for Microsoft Exchange Server 2010

CA ARCserve Replication and High Availability products provide protection for Exchange 2010 at the Mailbox database level. With Exchange 2003 and 2007 the protection is at Storage group level. As we know that Microsoft Exchange 2010 does not allow creating Mailbox Database with the same name on multiple Exchange Servers. In order to avoid such mailbox database name conflict between master and replica, CA ARCserve Replication and High Availability products automatically change the Mailbox database name on replica by adding a random number to the database name.

Both products replicate live, online Exchange Server databases. CA ARCserve High Availability monitors the availability of the Active Exchange Server. In case of any disaster it will automatically failover and start Exchange databases on Replica server based on scenario switchover properties. All users will then be redirected from the mailbox store on the Master to that on the Replica server.



In Exchange 2010, Client Access Server (CAS) plays an important role (outlook/MAPI clients connect to Exchange Mailbox only through servers that hold the CAS role). CA ARCserve High Availability protects and monitors the CAS role within Exchange 2010 Scenario.

Frequently Asked Questions

Q: Does CA ARCserve Replication and High Availability products support Database Availability Groups (DAG)?

A: No, ARCserve Replication and High Availability are used instead of DAG.

Q: Does ARCserve Replication and High Availability products protect all Exchange Server roles in Exchange 2010 farm?

A: CA ARCserve Replication and High Availability protects only Mailbox Server role and CAS Server role, provided the CAS role is running on the same machine which has a mailbox role.

Q: Can I use Exchange PowerShell commands to manage the Exchange replication and high availability Scenarios?

A: Yes, ARCserve Replication and High Availability have built-in support for Microsoft PowerShell and provides relative PowerShell commands for Exchange Server 2007 and 2010 replication scenarios.

Summary

CA ARCserve Replication and CA ARCserve High Availability help ensure that your critical Exchange systems, applications and data are always available, even in the face of planned and unplanned outages and natural disasters. Both products help secure entire Exchange servers through real-time LAN and WAN continuous or periodic replication for continuous data protection. CA ARCserve High Availability also helps maximize system and data availability.

For more information about the CA ARCserve Family of products, please visit arcserve.com/products or test drive our products at arcserve.com/software-trials.