



Assessment Mode

Using data replication mechanism you can maintain identical copies of files and databases by real-time capturing of byte-level changes in files on the Master server. But, it is a challenge for the administrators to identify the bandwidth requirements prior to the actual data transfer between the servers. CA ARCserve® Replication (formally known as CA XOssoft™ Replication) addresses this challenge by providing an Assessment Mode that estimates bandwidth requirements prior to deployment for any replication scenario. Unlike the competition, this capability has been streamlined to deliver bandwidth requirements without impacting your production environment.

OVERVIEW

Assessment Mode provides the ability to simulate replication scenarios without actual data replication; it provides the benchmark requirements without impacting the production server environment. In other words, no reboot is required to install and run the tool, and the tool can be uninstalled without any disruption to the server.

The Assessment Mode Report displays statistics in an easy to read and understand format, enabling you to plan the resources required for the replication.

BENEFITS

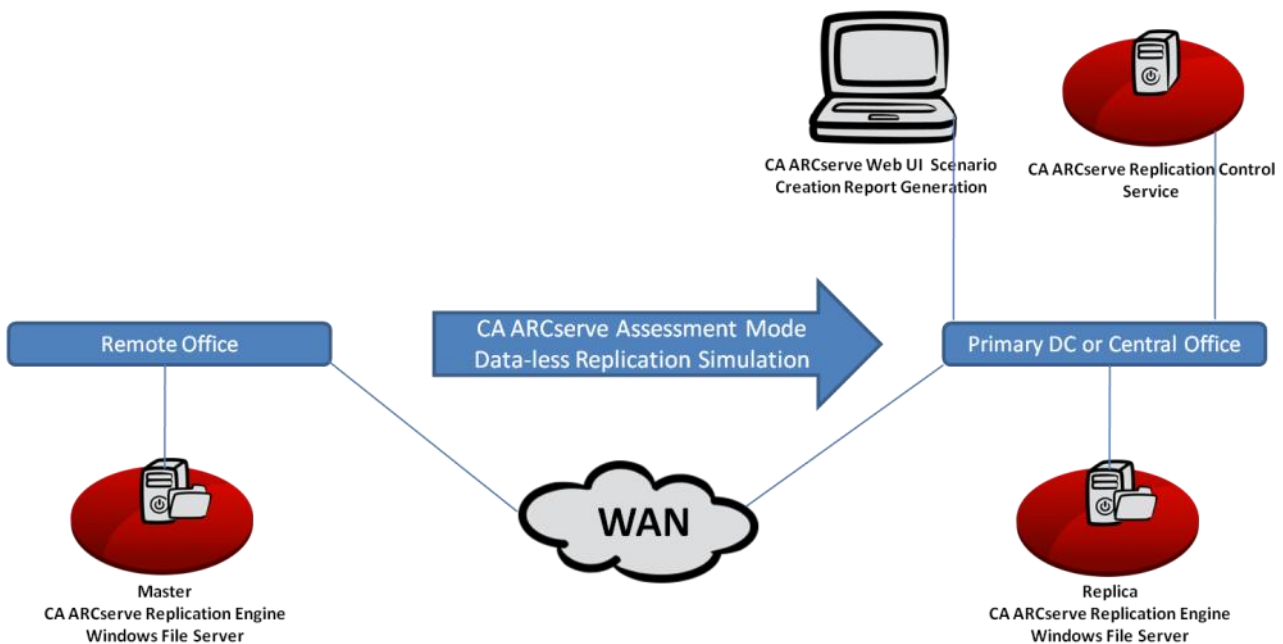
- Provides an intuitive and easy to use interface to estimate bandwidth load for replication of data for any given scenario prior to implementing the scenario.
- Provides compression ratio benchmarking prior the deployment.
- Displays benchmark results in an easy to read and understand format.
- Delivers bandwidth benchmarking without impacting current production environment.

Install/Configure

CA ARCserve Replication and CA ARCserve High Availability includes Assessment Mode option as a part of the base product. Assessment Mode can be utilized as a pure pre-implementation sizing/benchmarking tool by simply installing, running, and then removing if desired. You can configure the assessment to run when the scenario itself is created.

How this feature works

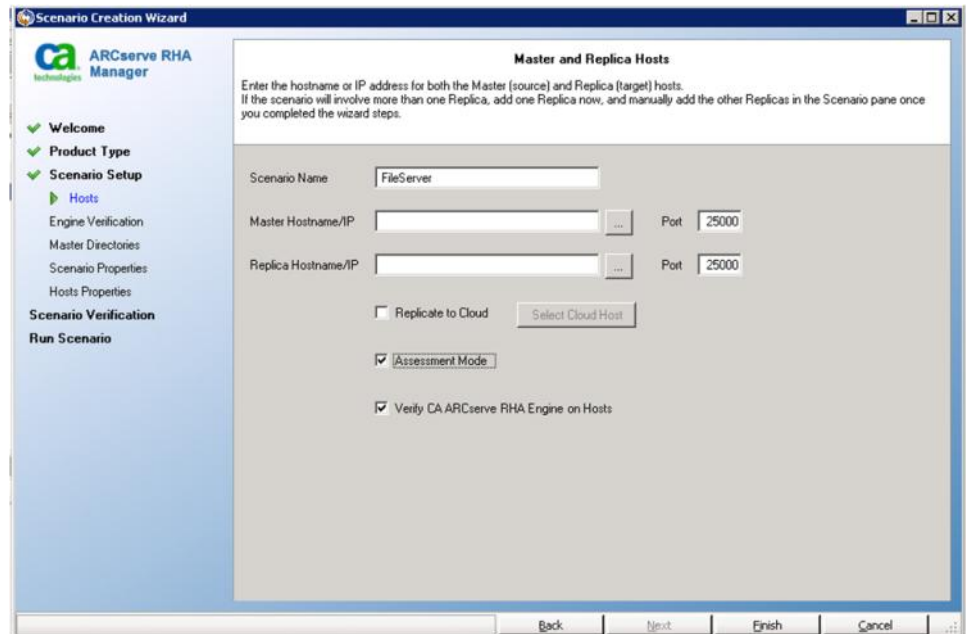
The following picture provides an architecture overview of how a scenario is executed in Assessment Mode.



To get the statistics using Assessment Mode prior to the data replication, create a new scenario using the new scenario creation wizard, check the assessment mode check box in the Scenario Setup to create the Assessment Mode Report.

Specify values for the product type, the Master and Replica Hostname/IP to get the bandwidth requirements prior to deployment for any replication.

After successful creation and verification of the scenario, click Run Now to execute the Scenario. After the Scenario is executed successfully, On the Quick Start Menu, click Reports, hostname/IP to get the Assessment Mode Report.



Assessment Mode Statistics

The Assessment Mode Report displays the Start/Stop times, server information, data transfer rates, the data transfer sizes and the compression ratios.

ASSESSMENT MODE REPORT

Comparison mode:	
Scenario:	Rep_1
Master host:	10.0.0.6(1)
Scenario start time:	16-Nov-07 10:19:47
Report start time:	16-Nov-07 10:19:47
Report finish time:	16-Nov-07 10:26:22

TIME STAMP	BYTES	COMPRESSED BYTES	COMPRESSED RATIO
16-Nov-07 10:19:00	0Bytes	0Bytes	0
16-Nov-07 10:20:00	0Bytes	0Bytes	0
16-Nov-07 10:21:00	0Bytes	0Bytes	0
16-Nov-07 10:22:00	0Bytes	0Bytes	0
16-Nov-07 10:23:00	0Bytes	0Bytes	0
16-Nov-07 10:24:00	20.07KB	5.46KB	73
16-Nov-07 10:25:00	3.8MB	1.78MB	54
16-Nov-07 10:26:00	0Bytes	0Bytes	0

Summary:

Data Max size	3.6MB
Data Min size	0Bytes
Data Avg size	489.22KB
Compressed data max size	1.78MB
Compressed data min size	0Bytes
Compressed data avg size	228.99KB

Summary

The CA ARCserve Replication Assessment Mode option enables you to accurately estimate the bandwidth requirements by identifying over time, the size and frequency of data changes in the live production environment prior to deployment of any replication scenario without impacting the production server or LAN/WAN environment,.

For more information about the CA ARCserve Family of products, please visit arcserve.com/products or test drive our products at arcserve.com/software-trials.