



Remote Office — Branch Office Protection

CA ARCSERVE D2D GIVES YOU MORE CONTROL OVER YOUR CHANGING INFRASTRUCTURE, APPLICATIONS AND DATA THROUGH A “SET IT AND FORGET IT” SOLUTION THAT MAKES PROTECTING AND RECOVERING YOUR DATA A SNAP. THE SINGLE SNAPSHOT BACKUP ALLOWS YOU TO RESTORE FILES, VOLUMES, APPLICATIONS OR THE ENTIRE SYSTEM TO ANY SERVER IN BOTH PHYSICAL AND VIRTUAL ENVIRONMENTS. MEET YOUR INTERNAL SLAS FOR RECOVERY TIME AND SAVE MONEY WITH THE ONLY PRODUCT THAT HAS BARE METAL RESTORE TO DISSIMILAR HARDWARE AND BLOCK-LEVEL INFINITE INCREMENTAL SNAPSHOTS, BASED ON CA’S I2 TECHNOLOGY™, IN ONE PACKAGE . CA ARCSERVE D2D MAKES PROTECTING AND RECOVERING DATA IN YOUR REMOTE OFFICES A PIECE OF CAKE, ELIMINATING THE NEED FOR REMOTE TAPES.

OVERVIEW

CA ARCserve D2D lets you perform frequent and periodic block level backups of local volumes. These backups can be stored on either an internal drive, an external drive, or on a NAS network drive. To avoid a continuous and never-ending backup cycle, the volume being backed up cannot also be specified as the backup destination. CA ARCserve D2D provides the capability to perform full, incremental, or resynchronization type backups.

When you initiate a backup (either as scheduled or manually launched), CA ARCserve D2D captures a block-level VSS snapshot image of your machine. During this block-level backup process, CA ARCserve D2D not only captures the data, but also creates a catalog containing all information related to the OS, installed applications, configuration settings, necessary drivers, and so on. When required, you can then restore this backed-up image to recover your data or your entire machine.

BENEFITS

CA ARCserve D2D provides the following features:

- Backup Data – lets you perform full, incremental, and resync type backups.
- Infinite Incremental Backups—Block level incremental changes
- Application Consistent Backups
- Ad Hoc Backups
- Backup Status Monitoring
- Restore Data—File-level restore, Volume-level restore, Application Database restore, Bare Metal Recovery
- Disk Resizing
- Remote Deployment

Remote Office Deployment

After CA ARCserve D2D is installed on a server, you can deploy it remotely to other selected servers using the CA ARCserve D2D User Interface. When CA ARCserve D2D is deployed remotely you will capture all the files and folders you would get if you deployed it locally without having to visit the remote system.

Note:

- If you installed CA ARCserve D2D using the x86 server only installation package, you will then only be able to deploy it to another x86 server.
- If you installed CA ARCserve D2D using the x64 server only installation package, you will then only be able to deploy it to another x64 server.
- If you installed CA ARCserve D2D using the common x86 and x64 server installation package, you will then be able to deploy it both x86 and x64 servers.

From the CA ARCserve D2D home page, select **Deploy**, then select **Add**.

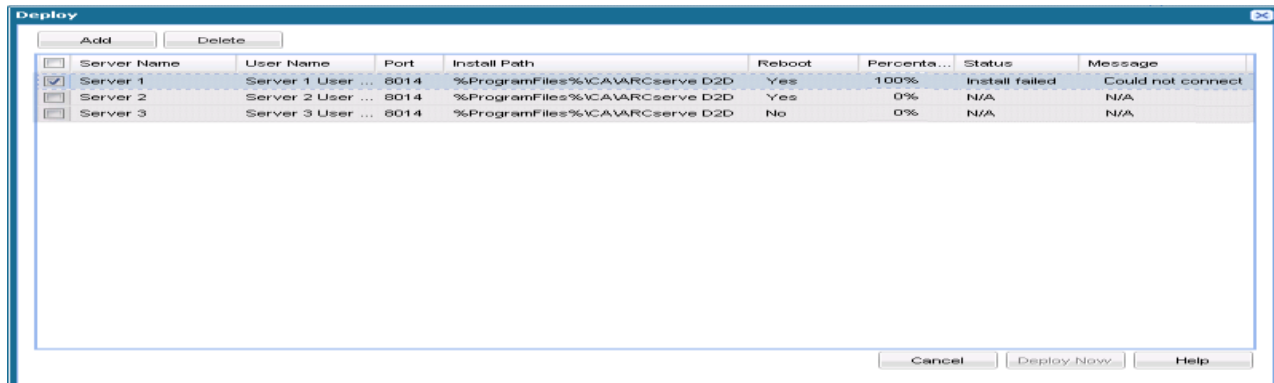
Select the server for remote deployment and click **Deploy Now** to launch the remote deployment process.

A status message is displayed indicating if the remote deployment was successful. When the remote deployment is successful, you will be able to access CA ARCserve D2D from that remote server; however, you will only be able to perform backups on servers that are properly licensed.

In addition, the name of the remotely deployed server will now be added to the Server drop down list on the CA ARCserve D2D home page, which lets you quickly and easily manage or view the status of these servers.

¹Infinite incremental snapshots, based on CA’s I² technology™, refer to the function of performing an initial full backup via snapshot technology and incremental backup snapshots from then on eliminating the need to make another full copy of the data.

Server Selection List (Includes Remote Office Servers)



From the home page, you can view the name of the CA ARCserve D2D server you are managing and also select a server to manage from the Server Selection List. After CA ARCserve D2D is installed on a server, you can then further deploy it to other remote servers from this CA ARCserve D2D UI. Servers will be added to the Server Selection list when you successfully deploy CA ARCserve D2D to a remote server. The Server drop-down lists lets you quickly and easily manage or view the status of these servers.

Frequently Asked Questions

Q: Can I manage multiple sites from a single ARCserve D2D Console?

A: Yes

Q: Do we need license to be able to deploy CA ARCserve D2D on the remote machines?

A: No, you do not need any license to deploy CA ARCserve D2D on remote machines.

Summary

- Easy to download and install to immediately start helping to protect your servers.
- Helps eliminate the backup window with snapshot based disk to disk backup.
- Uses less storage space, performs backups faster and puts less of a load on your production servers with Block Level Infinite Incremental backups based on CA's I² technology.
- Helps meet RTOs by recovering complete systems quickly to alternate hardware or virtual environments, even from a bare-metal state.
- Provides greater levels of protection with frequent backups. I² technology enables backups as frequently as every 15 minutes and only store changed data reducing storage space requirements and increasing recovery points.
- Offers fast recovery of files, volumes, systems and database files and provides a view of the entire disk at any previous backup point in time.
- Bare Metal Restore offers a very fast way to recover a crashed server to the same or dissimilar hardware.

For more information about the CA ARCserve Family of products, please visit arcserve.com/products or test drive our products at arcserve.com/software-trials.